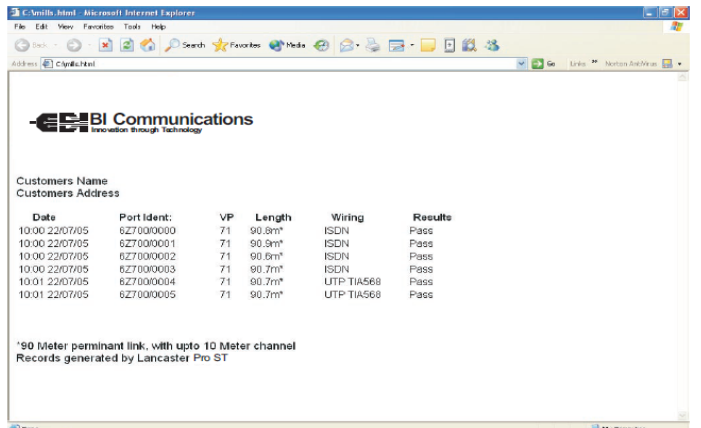
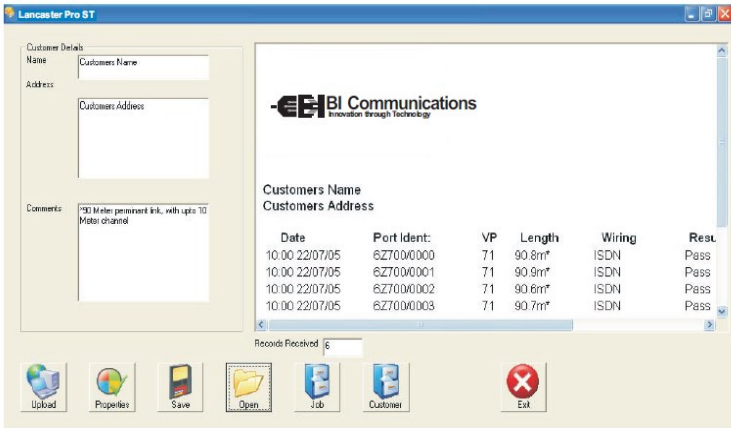
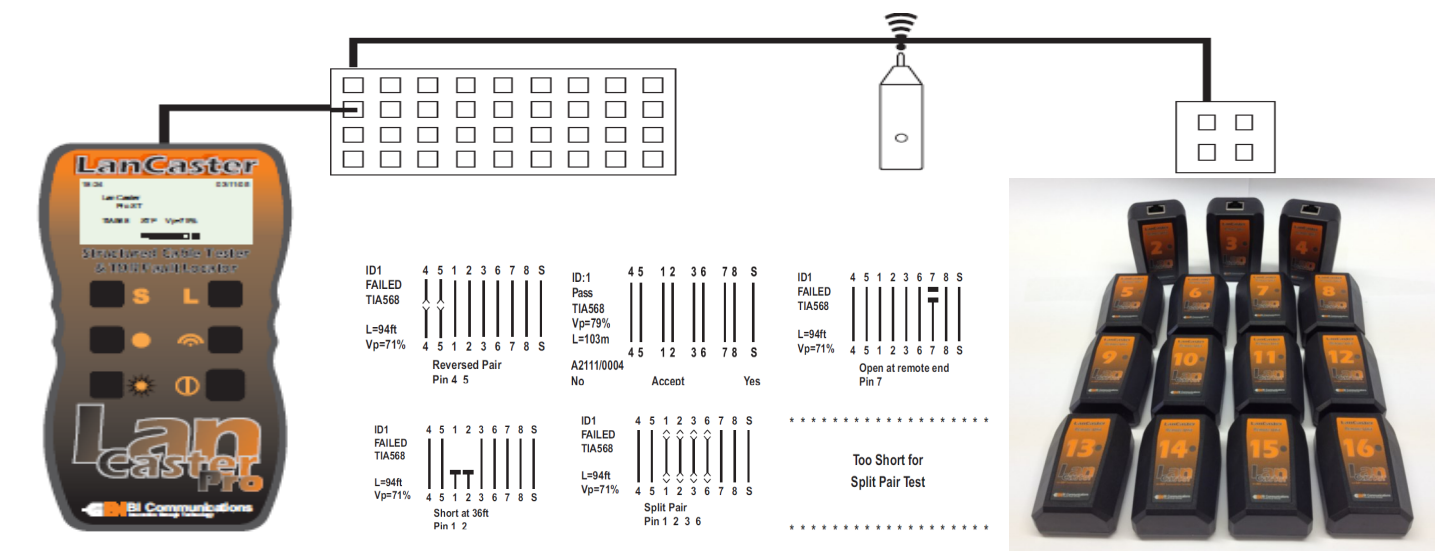


LanCaster Pro ST

Structured Cabling Tester

- Certifies cable continuity to TIA568A/B
- Records 1000 test results/view or download to pc
- Large 128 x 64 pixel LCD with backlight
- Multi-lingual customisable certification software
- Measures length of all 4 pairs
- 150m (500ft) measuring range
- Voltage warning and test inhibit
- Indicates all common wiring faults including split pairs
- Measures and identifies length to fault
- Complete with 1 active remote unit and test leads
- Up to 16 unique intelligent remote units/office identifiers
- Up to 7 hours continuous battery life



The LanCaster Pro-ST is a low cost wire map tester which tests and certifies structured cabling continuity to TIA 568A/B, USOC and ISDN standards.

The LanCaster Pro-ST displays on-screen wiring configurations showing the length of all 4 pairs and length of pair to fault up to 150m (500ft).

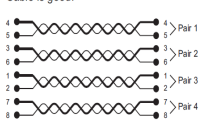
The LanCaster Pro-ST will store up to 1000 test results which can viewed or be downloaded to PC using the LanCaster Pro-ST software (provided). Test results can then be customised with your corporate identity and certificates produced displaying the customer's location/job, length, cable VP and testing standard.

Maintaining all the proven features of the LanCaster Pro-ST, identifies all common faults on wiring Schemes, installed to TIA568A/B, USOC and ISDN Standards, including open circuit wires, shorted pairs, shorts between pairs, crossed pairs and split pairs.



CABLE OK (OK)

Cable is good.

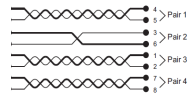


Message: Cable OK

REVERSED PAIR (RP)

One or more wires in one specific pair are Reversed at one end.

One or more pairs may be reversed in the same cable.

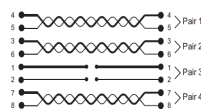


Message: Reversed Pair Pin 3 6

OPEN PAIR (OP)

One specific pair is open. It may be one or two wires in the same pair.

One or more pairs may also be opened in the same cable.



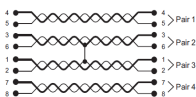
Message: Open at Near End or Remote End Pin 1 2



SHORTED WIRES (SW)

Two wires from different pairs are shorted.

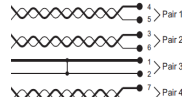
Two or more wires and pairs may be affected in the same cable.



Message: Short at Remote End or Near End Pin 2 3

SHORTED PAIR (SH)

One specific pair is shorted.

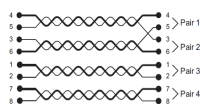


Message: Short at Remote End or Near End Pin 1 2

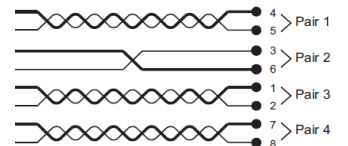
CROSSED WIRES (CW)

Two wires from different pairs are crossed at one end.

Two or more pairs may have wires crossed with another pair.



Message: Crossed Wires Pin 3 5 at Remote End or Near End



7 Buckwins Square · Basildon · Essex · SS13 1BJ · UK ·

Tel: + 44 (0) 1268 729393

email:sales@bicomcommunications.co.uk

www.bicomcommunications.co.uk

