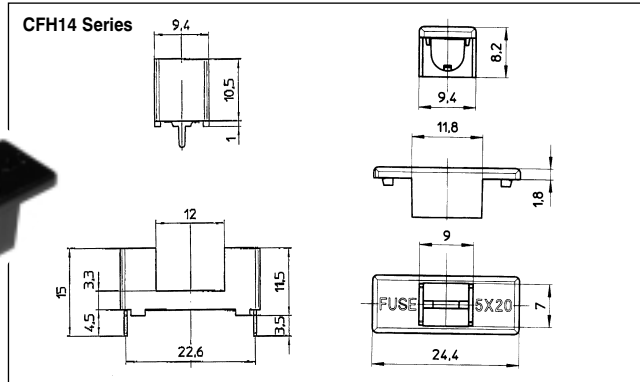


5x20mm Semi-enclosed PCB Mounting Fuseholders

Features

- PC board mounting
- Fuse retaining insulation cover
CFH14HB for CFH14
- Enclosed contacts
- 22.6mm pitch
- Black Colour
- IEC 127-6



| Type No. | Fuse Size |
|----------|-----------|
| CFH14 | 5x20mm |
| CFH14HB | 5x20mm |

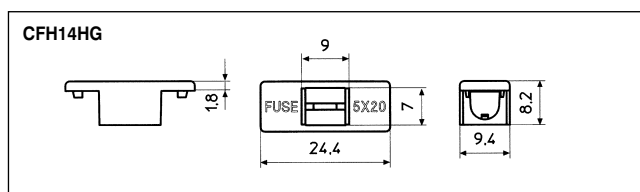
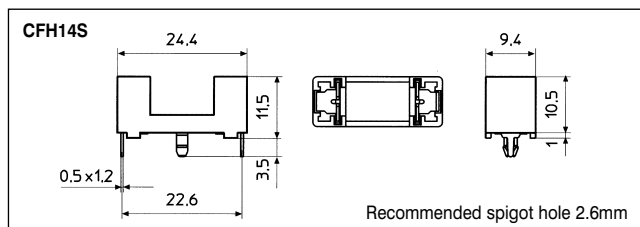
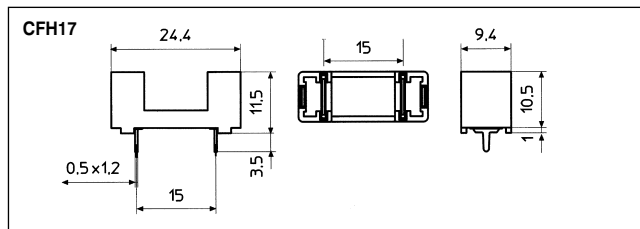
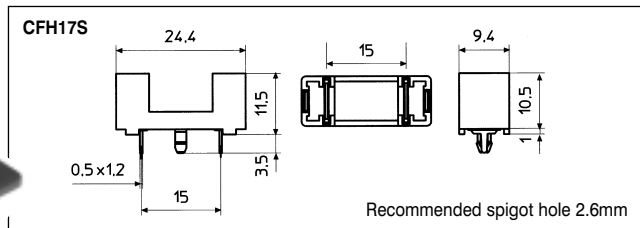
Specification

| | |
|----------------------------|---------------------------------|
| Rating: | 6.3A/250V |
| Contacts/Resistance: | Tinned nickel plated Brass/<5mΩ |
| Dielectric strength | >3kV/60sec |
| Material: | UL94-V0 flame retardant PA68 |
| Insulation Resistance: | 100MΩ |
| Power dissipation: | 1.6W |
| Recommended PCB hole size: | 1.5mm |
| Approvals: | CE, SEMKO & VDE c pending |

5x20mm Semi-enclosed PCB Mounting Fuseholders

Features

- PC board mounting
- Fuse retaining insulation cover
- Enclosed contacts
- IEC 127-6
- Green Colour



Specification

| | |
|----------------------------|---------------------------------|
| Rating: | 6.3A/250V |
| Contacts/Resistance: | Tinned nickel plated Brass/<5mΩ |
| Dielectric strength | >3kV/60sec |
| Material: | UL94-V0 flame retardant PA68 |
| Insulation Resistance: | 100MΩ |
| Power dissipation: | 1.6W |
| Recommended PCB hole size: | 1.5mm |
| Approvals: | CE, SEMKO & VDE c pending |


| Type No. | Fuse Size |
|----------|-----------|
| CFH17S | 5x20mm |
| CFH17 | 5x20mm |
| CFH14S | 5x20mm |
| CFH14HG | 5x20mm |

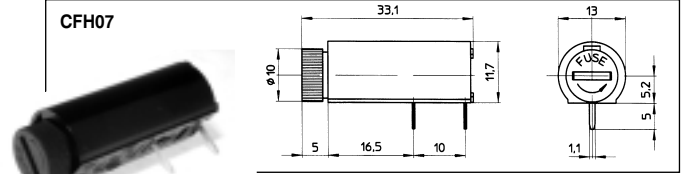
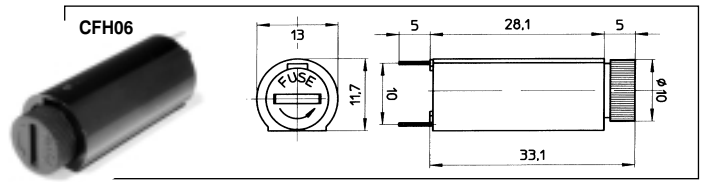
5x20mm **Horizontal & Vertical PCB Mounting Fuseholder Compact**

Features

- Finger/screwdriver release bayonet carrier
- Horizontal or vertical mounting
- Compact footprint 10mm pitch
- Anti solder wicking
- IEC 127-6
- Industry standard

Specification

| | |
|----------------------------|-----------------------------------------------------------------------------------------------------|
| Rating: | 6.3A/250V |
| Contacts/Resistance: | Tinned Nickel plated Brass/<5mΩ |
| Dielectric strength | >3kV/60sec |
| Insulation Resistance: | >100MΩ |
| Mouldings: | UL94-V0 flame retardant PBT |
| Power dissipation: | 2.5W |
| Recommended PCB hole size: | 1.3mm |
| Approvals: | VDE, SEMKO,  , CSA |

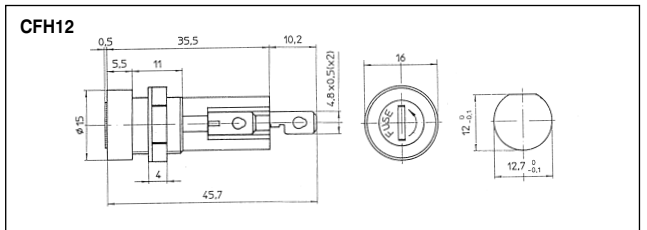
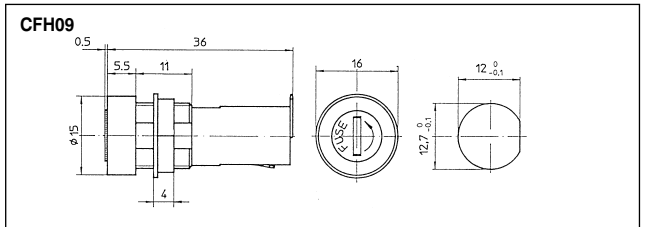
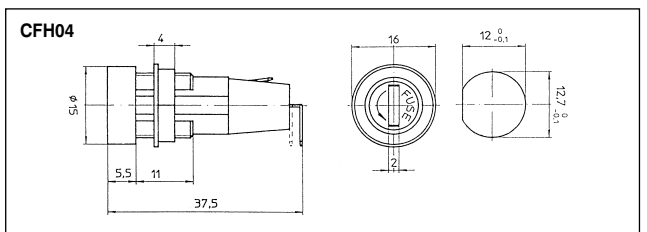


| Type No. | Fuse Size |
|----------|-----------|
| CFH06 | 5x20mm |
| CFH07 | 5x20mm |

5x20mm **Low Profile Panel Mounting Fuseholders**



Features

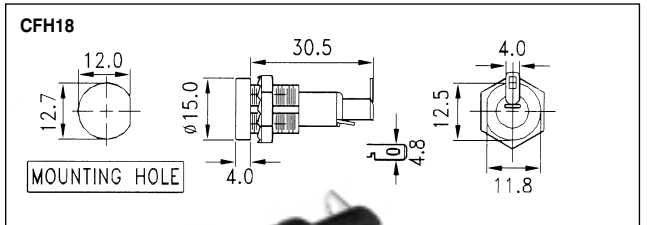
- Low profile panel mounting
- Screw driver release, screw carrier CFH04
- Screw driver release bayonet carrier CFH09, CFH12 and CFH18
- Combined solder / 2.8mm quick connect terminal CFH04, CFH09
- Combined solder / 4mm quick connect terminal on CFH18
- Combined solder / 4.8mm quick connect terminal on CFH12
- Anti-rotation D fixing
- IEC 127-6
- Industry standard
- Competitive



| Type No. | Fuse Size | Type No. | Fuse Size |
|----------|-----------|----------|-----------|
| CFH04 | 5x20mm | CFH12 | 5x20mm |
| CFH09 | 5x20mm | CFH18 | 5x20mm |

Specification

| | |
|------------------------|---------------------------------------------------------------------------------------------------------------------------------------------------------------------------------------------------------------------------------------------|
| Rating: | CFH04 & CFH09: 6.3A/250V CFH12 & CFH18: 10A/250V |
| Contacts/Resistance: | Tinned nickel plated Brass/<5mΩ |
| Material: | UL94-V0 flame retardant PBT |
| Dielectric strength | >3kV/60sec (CFH18=AC1.5kV min) |
| Insulation Resistance: | >100MΩ |
| Power dissipation: | 2.5W |
| Approvals: | SEMKO,  , CSA and VDE on CFH04, CFH09 and CFH12. CSA and  on CFH18 |



PCB
TERMINAL
BLOCKS

FUSES &
FUSE-
HOLDERS

BATTERIES

LED'S

MINIATURE
SWITCHES

INTERFACE
MODULES &
SUPPORTS

ENCLOSURES

IC & PLCC
SOCKETS

RELAY
BASES

CONTROL
PRODUCTS



FM28614
BS EN ISO 9002:
1994

Tel: +44 (0)1727 864437 Fax: +44 (0)1727 855400
E-mail: info@camden-electronics.co.uk Website: www.camden-electronics.co.uk

Because we operate a constant improvement policy, our products are subject to change without notice.



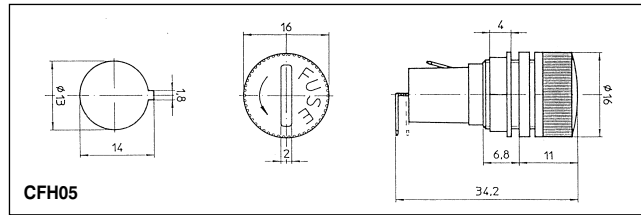
5x20mm Panel Mounting Fuseholder

Features

- Finger release screw carrier
- Anti-rotation key fixing
- Combined solder/2.8mm quick connect terminals
- Compact
- Competitive
- IEC 127-6



| Type No. | Fuse Size |
|----------|-----------|
| CFH05 | 5x20mm |



Specification

| | |
|------------------------|---------------------------------------|
| Rating: | 6.3A / 250V |
| Contacts/Resistance: | Tinned nickel plated Brass/<5mΩ |
| Material: | UL94-V0 flame retardant polycarbonate |
| Insulation Resistance: | > 100MΩ |
| Dielectric strength | 3kV/60sec |
| Power dissipation: | 2.5W |
| Approvals: | CE & SEMKO. c pending |

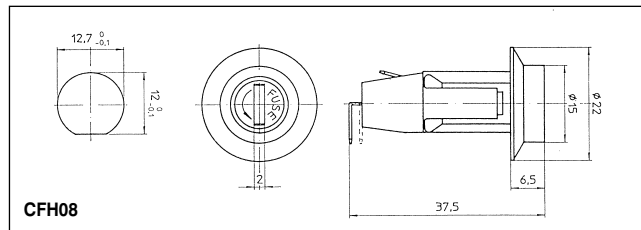
5x20mm Snap Fit Panel Mounting Fuseholders

Features

- Snap fit panel mounting
- Screw driver release screw fuse carrier
- Combined solder/2.8mm quick connect terminals
- Antirotation D fixing
- Semko, , CSA, VDE and CE approved
- IEC 127-6



| Type No. | Fuse Size |
|----------|-----------|
| CFH08 | 5x20mm |



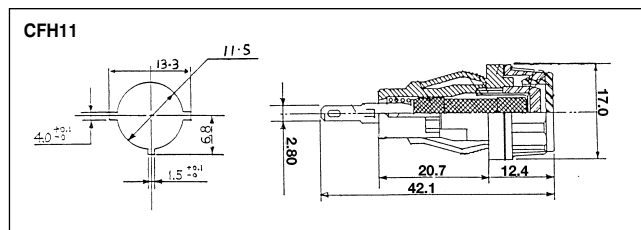
CFH08

Features

- Snap fit panel mounting
- Finger release bayonet cap
- Combined solder/2.8mm quick connect terminals
- Antirotation fixing
- and CSA approved




| Type No. | Fuse Size |
|----------|-----------|
| CFH11 | 5x20mm |



Specification

| | |
|------------------------|------------------------------------------------------------------------------------|
| Rating: | CFH08: 6.3A/250 V CFH11: 10A/250V |
| Contacts/Resistance: | Tinned nickel plated Brass/<5mΩ |
| Material: | CFH08: UL94-V0 flame retardant PBT CFH11: UL94-V0 flame retardant polycarbonate |
| Insulation Resistance: | > 100MΩ |
| Power dissipation: | 2.5W (CFH08) |
| Dielectric strength | CFH08 3kV CFH11 1.5kV |

6.3x32mm (1/4"x1 1/4") **Snap Fit Panel Mounting Fuseholder****Features**

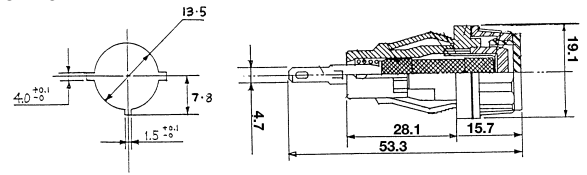
- Snap fit panel mounting
- Finger release bayonet cap
- Combined solder/4.8mm quick connect terminals
- Antirotation fixing
-  and CSA approved




CFH13

| Type No. | Fuse Size |
|----------|-----------|
| CFH13 | 6.3x32mm |

CFH13

**Features**

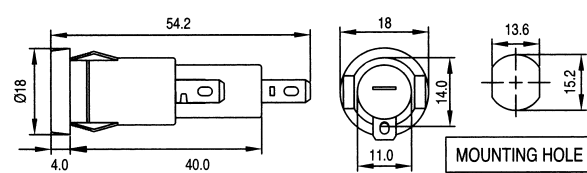
- Low profile snap fit panel mounting
- Screw driver release bayonet cap
- Combined solder/4.8mm quick connect terminals
- Antirotation fixing
-  approved



CFH19


| Type No. | Fuse Size |
|----------|-----------|
| CFH19 | 6.3x32mm |

CFH19

**Specification**

| | |
|------------------------|------------------------------------------------------------------------------------------|
| Rating: | 10A/250V |
| Contacts/Resistance: | Tinned nickel plated Brass/<5mΩ |
| Material: | UL94-V0 flame retardant polycarbonate on CFH13. UL94-V2 Nylon on CFH19 (cap UL94-V0 PBT) |
| Insulation Resistance: | > 100MΩ |
| Dielectric strength | 1.5kV |

6.3x32mm (1/4"x1 1/4") **Panel Mounting Fuseholder****Features**

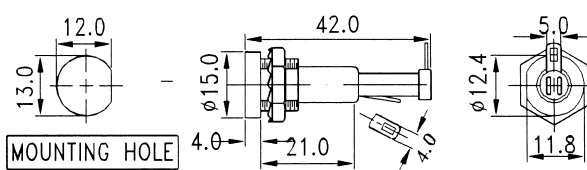
- Low profile panel mounting
- Screw driver release bayonet cap
- Combined solder/4.8mm quick connect terminals
- Antirotation fixing
-  and CSA approved



CFH20

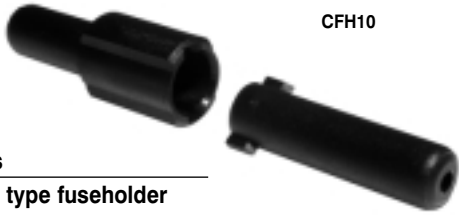
| Type No. | Fuse Size |
|----------|-----------|
| CFH20 | 6.3x32mm |

CFH20

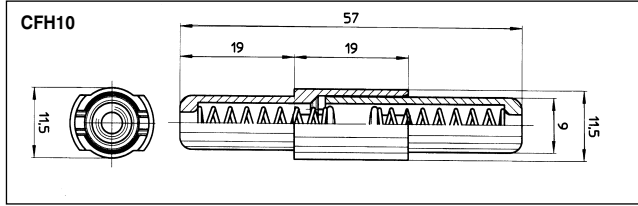
**Specification**

| | |
|------------------------|---------------------------------------|
| Rating: | 15A/250V |
| Contacts/Resistance: | Tinned nickel plated Brass/<5mΩ |
| Material: | UL94-V0 flame retardant polycarbonate |
| Insulation Resistance: | > 100MΩ |
| Dielectric strength | 1.5kV |

5x20mm & 6.3x32mm Inline Fuseholder



CFH10



Features

- Inline type fuseholder
- Accepts 5 x 20mm, 6.3 x 32mm (1 1/4" x 1 1/4") and 1" x 1/4" fuses
- Allows own choice of wire
- Bayonet type cover

| Type No. | Fuse Size |
|----------|-----------|
| CFH10 | 6.3x32mm |
| | 6.3x25mm |
| | 5x20mm |

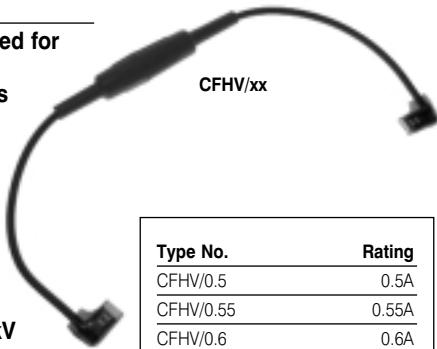
Specification

| | |
|------------------------|---------------------------------|
| Rating: | 6.3A / 250V |
| Contacts/Resistance: | Tinned nickel plated Brass/<5mΩ |
| Material: | PA6 |
| Insulation Resistance: | > 100MΩ |
| Dielectric strength | 3kV/60sec |
| Power dissipation: | 1.6W |
| Approvals: | CE |

High Voltage Fuses (for microwave ovens)

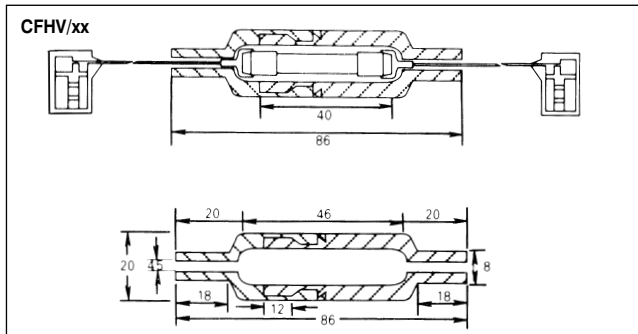
Features

- Specially designed for protection of microwave ovens
- TUV approved
- Complete with insulated package, lead wires and insulated spade connectors
- Rated voltage 5kV @ 10kHz
- Overall length 33cm approx



CFHV/xx

| Type No. | Rating |
|-----------|--------|
| CFHV/0.5 | 0.5A |
| CFHV/0.55 | 0.55A |
| CFHV/0.6 | 0.6A |
| CFHV/0.7 | 0.7A |
| CFHV/0.75 | 0.75A |
| CFHV/0.8 | 0.8A |
| CFHV/1 | 1.0A |



Test Specification

| Rated Current | Above 100mA to 10A | Rated Current | Above 100mA to 10A |
|---------------|--------------------|---------------|--------------------|
| 2.1In | max 20s | 4In | min 8ms |
| 2.75In | min 20ms | | max 400ms |
| | max 1500ms | 10In | max 80ms |

If you use PTC's

- Positive temperature coefficient resettable fuses
- Protects circuits from overcurrent/over temperature
- Avoids maintenance with its auto resettable function
- Low resistance
- VDE approved
- Competitively priced

Then call

our sales office for more information on the Camden Resettable Fuse (CRF)

Tel: 01727 864437 Fax: 01727 855400 Sales@camden-electronics.co.uk www.camden-electronics.co.uk

