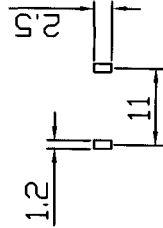
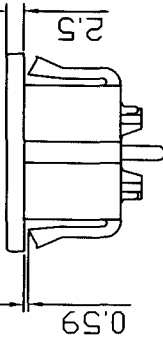
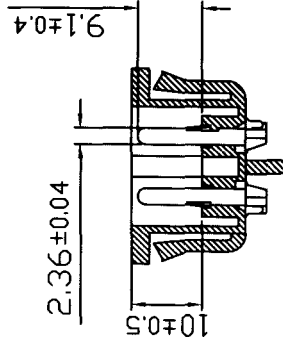
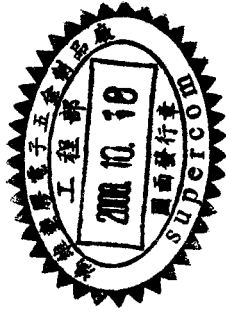
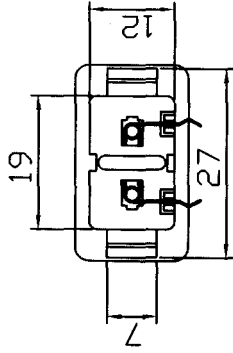
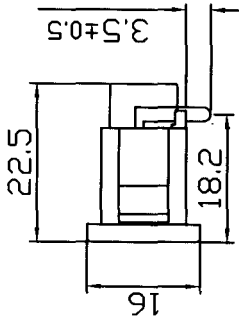
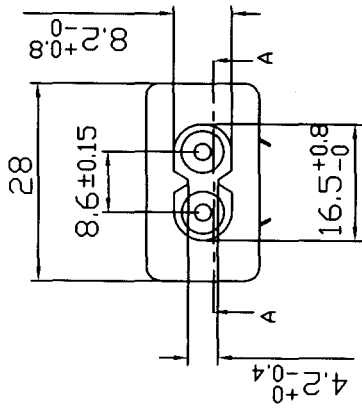
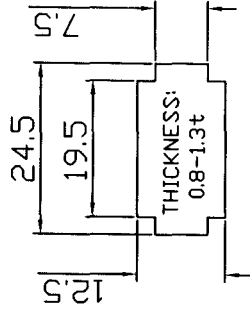


物質名稱	限值	測試方法
Pb(鉛)	<50PPM	IEC62321. IEC111. IECmethod. section11. 120r13
Cd(鎘)	<5PPM	IEC62321. IEC111. IECmethod. section11. 120r13
Hg(汞)	Not Detection	IEC62321. IEC111. IECmethod. section10
Cr ⁶⁺ (六價鉻)	Not Detection	IEC62321. IEC111
PBBS類	Not Detection	IEC62321. IEC111. IECmethod. section7
PBDES類	Not Detection	IEC62321. IEC111. IECmethod. section7



PCB LAYOUT



PANEL CUT-OUT

此為NL色號的白色產品

版別	日期	變更原因	繪圖	UL	CCC	TOLERANCE UNLESS OTHERWISE MARKED	2.5A/250V~
B5				CSA		DIMENSION : 0 — 10 ±0.1	1. SOLDERING: PIN PHOSPHOR BRONZE 0.3X2T TIN PLATING
B4				VDE		比例: 1:1	2. CONTACT: PIN PHOSPHOR BRONZE Ø2.36 TIN PLATING
B3				SEMKO		UNIT: mm	3. BODY INSULATOR: NYLON 66
B2				NEMKO			
B1				DEMKO			
繪圖	何華蛟	設計	日期	2008/09/29	審核	<p style="text-align: center;">SUPERCOM</p> <p style="text-align: center;">鴻維精密工業股份有限公司</p>	
日期	2008-10-14	設計	日期	2008-10-14	審核		
日期		設計	日期		審核	版別	B 版

