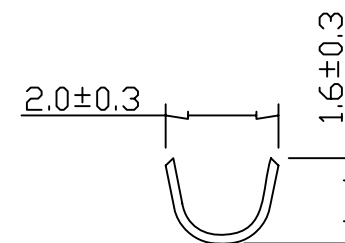
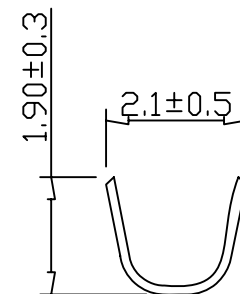


Specifications

Current Rating: 2A AC, DC
 Voltage Rating: 250 AC Maximum
 Operating Temp: -25°C ~ + 85°C
 Contact Resistance: 10MΩ Max
 Insulation Resistance: 1000MΩ Min
 Terminal Material: Brass/ Tin-plated/ Gold-plated

742-7 0 - T00001
 1 2 3

- 1. 7: Green Product
- 2. 0: 2542T
- 3. Pinrex internal code.



Section A-A

Section B-B

				TOLERANCE				OLD PART NO.		TITLE	
				.0 = ±.30		UNITS : mm		2542T		Molex 2.54mm Wire to BoardTerminal	
				.00 = ±.20				DRAWER		CHECK	
				.000 = ±.XXX				Naomi			
A		RELEASE		2008/01/22		SCALE		SHEET		NEW PART NO.	
REV.		DESCRIPTION		DATE		NONE		1 OF 1		742-70-T00001	
				ANG.=±3'		SIZE		REV.		DRAW NO.	
						A4		A		742-70-T00001	
										頻銳科技股份有限公司 PINREX TECHNOLOGY CORP.	