

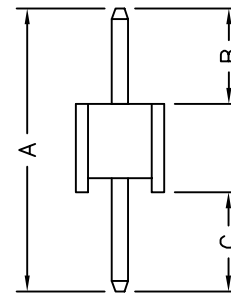
Recommended P.C.B Layout

MATERIAL
Contact Pin : Brass

SPECIFICATION

Current Rate : 1 AMP
Insulation Resistance : 5000MΩMin. at DC 500V
Contact Resistance : 20mΩMax. at DC 100mA
Dielectric Voltage : AC 500V for one minute
Operation Temperature : -40°C to + 105°C

240-x 6- xx G B xx
1 2 3 4 5 6



- 1. 5: Normal Parts (NYLON 6T)
- 7: Green Product (NYLON 6T)
- 9: Green Product High Temp
- 2. 1: Single row
Plastic Height=1.7mm
- 6: Single row
Plastic Height=2.5mm
- 3. No. of contacts per row
- 4. G: Gold flash
T: Tin plated
- 5. B: Black Insulator
- 6. Pinrex internal code.

If you need other dimensions,
please fill out Dim A/B/C or
contact our sales representatives.

DIM A	DIM B	DIM C

						OLD PART NO. PH4S2-1xxGB		TITLE PIN HEADER 1.27*2.54mm STRAIGHT TYPE, SINGLE ROW		頻銳科技股份有限公司 PINREX TECHNOLOGY CORP.
		TOLERANCE .0 = ±.30 .00 = ±.20 .000 = ±.XXX .0000 = ±. ANG. = ±3°		UNITS : mm		DRAWER <i>LiuHui</i>		CHECK		
A	RELEASE	2008/04/03		SCALE	SIZE	SHEET	REV.	APP'D	DRAW NO.	
REV.	DESCRIPTION	DATE		NONE	A4	1 OF 1	A		240-x6-xxGBxx	