

FEATURES

- ※Single In-line Packaging saves PCB space
- ※Available in vertical or right angle models

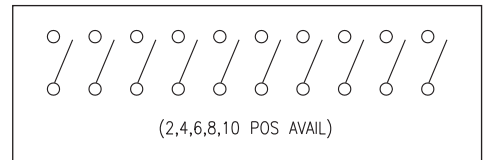
APPLICATION

- ※Industrial control
- ※Computers and peripherals
- ※Variety of function controls

SPECIFICATION

| | |
|-----------------------|--------------------|
| Contact Rating | 10mA, 5V DC |
| Contact Resistance | 100mΩ max. |
| Insulation Resistance | 100MΩ min. 500V DC |
| Dielectric Strength | 300V AC/1 minute |
| Operating Force | 800gf max. |
| Operating Life | 500 cycles |
| Operating Temp. | -30°C ~ +80°C |
| Storage Temp. | -30°C ~ +80°C |

CIRCUIT

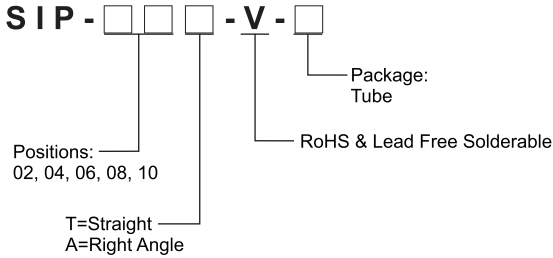


PACKAGE

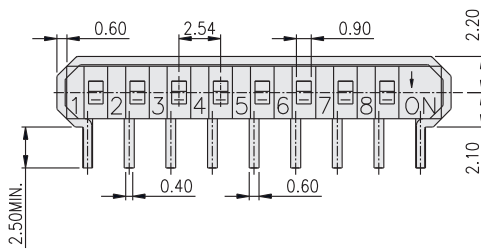
<Tube>

| | |
|-----------------|-----------------|
| SIP-02A: 56 pcs | SIP-02T: 62 pcs |
| SIP-04A: 35 pcs | SIP-04T: 37 pcs |
| SIP-06A: 25 pcs | SIP-06T: 27 pcs |
| SIP-08A: 20 pcs | SIP-08T: 20 pcs |
| SIP-10A: 16 pcs | SIP-10T: 17 pcs |

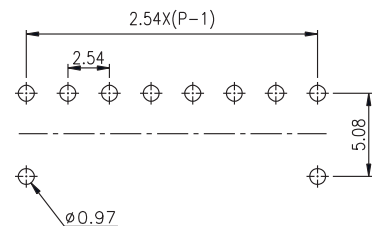
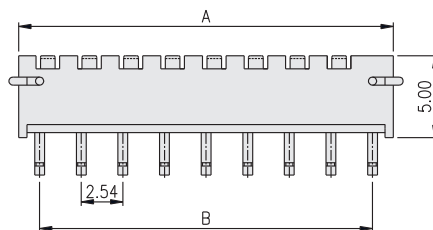
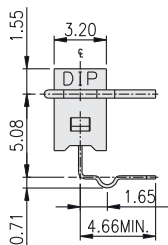
HOW TO ORDER



SIP-A

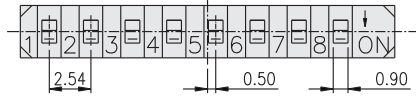


| PART NO. | NO.OF POS. | DIM.A | DIM.B |
|----------|------------|-------|-------|
| SIP-02 | 2 | 7.62 | 5.08 |
| SIP-04 | 4 | 12.70 | 10.16 |
| SIP-06 | 6 | 17.78 | 15.24 |
| SIP-08 | 8 | 22.86 | 20.32 |
| SIP-10 | 10 | 27.94 | 25.40 |

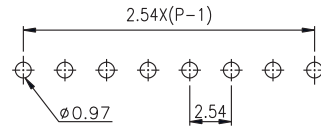
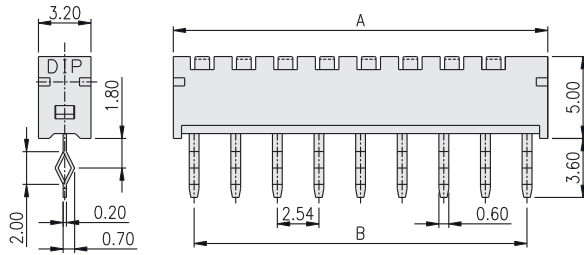


P.C.B. LAYOUT

SIP-T



| PART NO. | NO.OF POS. | DIM.A | DIM.B |
|----------|------------|-------|-------|
| SIP-02 | 2 | 7.62 | 5.08 |
| SIP-04 | 4 | 12.70 | 10.16 |
| SIP-06 | 6 | 17.78 | 15.24 |
| SIP-08 | 8 | 22.86 | 20.32 |
| SIP-10 | 10 | 27.94 | 25.40 |



P.C.B. LAYOUT

DIP SWITCH