

ENVIRONMENTAL SPECIFICATIONS

- Degree of protection : IP 67
- Shock resistance : 100 g according to IEC 512-4, test 6c
- Vibration resistance : 10-500 Hz - 10 g according to IEC 512-4, test 6d
- Salt spray : IEC 512-6, test 11f
- Operating temperature : -40°C to +85°C

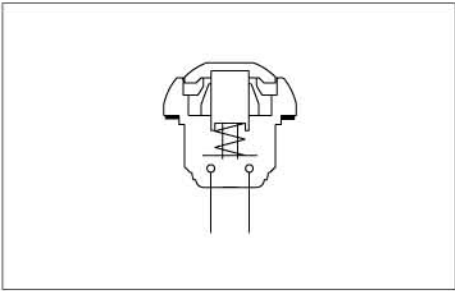
MATERIALS

- Case : thermoplastic UL94-V0
- Plunger : polyamide 6/6
- Bushing/bezel : polyamide 6/6
- Contacts : silver, gold plated
- Terminal seal : epoxy

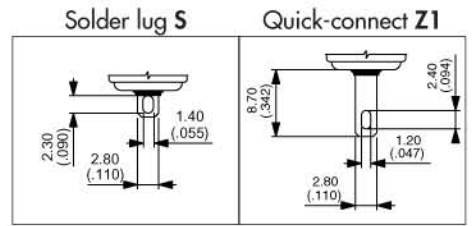
ELECTRICAL AND GENERAL SPECIFICATIONS

- Max. current/voltage rating with resistive load :
400mA 32VAC - 100mA 50VDC - 125mA 125VAC
- Initial contact resistance : 50 mΩ max.
- Insulation resistance : 1 GΩ min. at 500VDC
- Dielectric strength : 1.000 VAC rms
- Electrical life at full load : 500.000 cycles
- Panel thickness :
 - IB series : 0,8 mm (.031) min. - 1,8 mm (.071) max.
 - IS series : 1,5 mm (.059) min. - 4 mm (.157) max.
- Total travel : 1,5 mm (.059)
- Operating force : 3N +/- 1N
- Contact bounce : 10 ms
- Mechanical life : 1.000.000 cycles
- Torque : 1,5 Nm max. applied to nut
- Soldering : 300°C max. for 3 seconds

D




- Snap-in or with threaded bushing
- Eight plunger colours
- Flat plunger top allowing marking
- Antirotation bushing




Snap-in mounting - solder lugs

→ Flat



IBR3SAD



Normally open


Dimensions: 13.00 (511), 5.00 (196), 0.50 (019), 5.08 (200), 3.50 (137), 1.20 (047), 2.80 (110), 2.00 (078), 9.50 (377), 2.80 (110), 2.00 (078), 1.40 (055), 2.30 (090), 8.70 (342), 2.40 (094), 1.20 (047), 0.75 (030), 0.75 (030).

Also available with quick-connect terminals : **IBR3Z1AD**

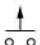
Panel thickness : 0,8 mm to 1,8 mm

Mounting by threaded bushing - solder lugs

→ Flat



ISR3SAD



Normally open

Dimensions: 13.00 (511), 5.00 (196), 0.50 (019), 5.08 (200), 3.50 (137), 1.20 (047), 2.80 (110), 2.00 (078), 5.60 (220), 2.80 (110), 2.00 (078), 1.40 (055), 2.30 (090), 8.70 (342), 2.40 (094), 1.20 (047), 0.75 (030), 0.75 (030).

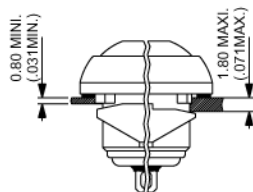
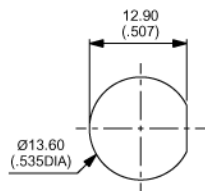
Thread: $\varnothing 12.00 \times 0.75 \text{SI}$ (.472DIA x 0.75IS)

Also available with quick-connect terminals : **ISR3Z1AD**

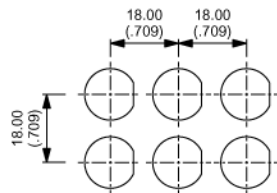
Panel thickness : 1,5 mm to 4 mm

IB SERIES MOUNTING

Panel cut-out

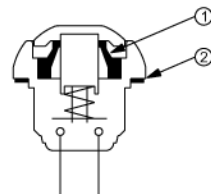


Matrix mounting



TACTILE FEEDBACK

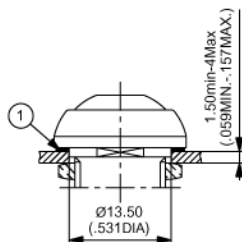
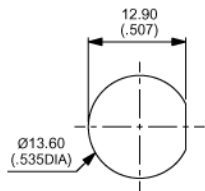
Cross section



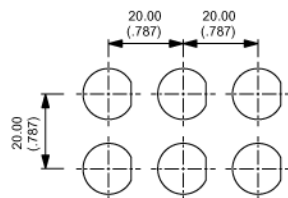
- ① Elastomer membrane ② Flat seal

IS SERIES MOUNTING

Panel cut-out



Matrix mounting



Operating force/travel

