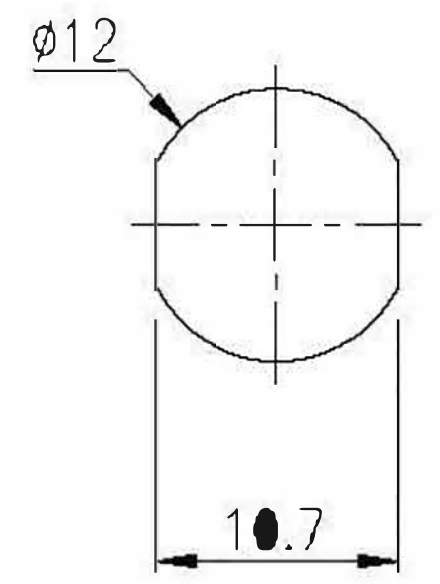
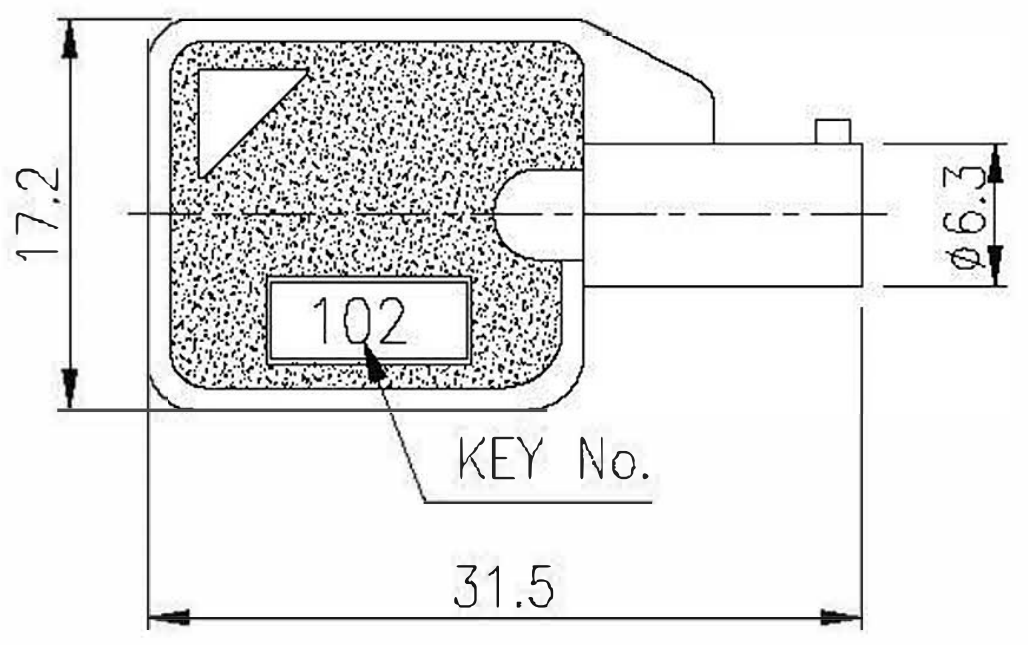


NOTES:

- * Zinc alloy die cast housing and cylinder, chrome plated.
- * Zinc alloy keys, chrome plated.
- * Silver plated contacts and terminals.
- * 2 Positions (off-on) 2 Terminal s.
- * 1 Combination available.
- * Material conform to 2002/95/EC (RoHS) requirement.



Recommended hole size

DESCRIPTION	KEYLOCK SWITCH			
PART NO.				
MATERIAL				
NOTE				
APPROVED BY	CHECKED BY	DRAWN BY		
TOLERANCES	UNIT	mm	SCALE	2:1
>0 ±0.1 >6 ±0.2 >30 ±0.3 >120 ±0.5 >315 ±0.8 >1000 ±1.2	800-767			

REV. NO.	COORDINATES	WAS	NEW	DATE	BY	REV.	A	WT.	g	DATE	03.03.06
1						6			7		8