

**Part Number: PRC 175/30 (Alternate Part No: S1265)**  
**Cylindrical Proximity Switch - Change Over Contacts - Suggested Magnet: PRM**  
**Product Data Sheet**

**PICTURE**



✓ **RoHS Compliant**

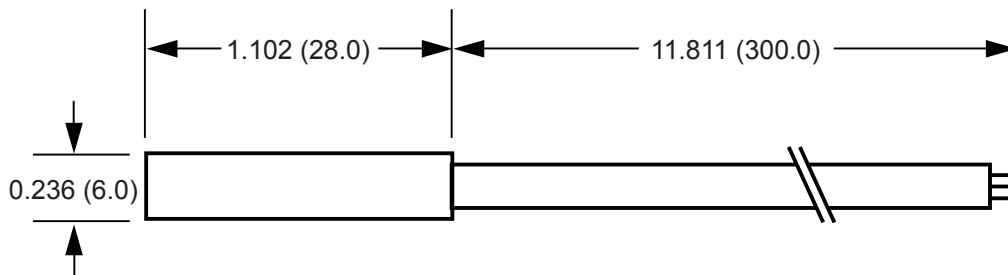
**APPLICATIONS INCLUDE**

- Position and limit sensing
- Linear actuators
- Security system switch
- Door Switch

**FEATURES**

- Also available in all Black.
- Custom cable lengths, strip lengths, cable types, terminations.
- If you do not see what you need, just ask, as there is a strong possibility we can do it !
- Device is intended to be mounted in an enclosure under UL recognition.

**DIMENSIONS**



Drawings not to scale.  
 All dimensions in inches (mm) nominal.

**SPECIFICATION**

Contact Form / Style	Change-Over
Switching Capacity (Resistive)	5 W/VA Max.
Switching Voltage	100 VAC Max.
Switching Current	0.5 A Max.
Carry Current	1.0 A Max.
Breakdown Voltage	200 VDC Min.
Contact Resistance	150 mOhms Max.
Switching Distance	3 mm Min.
Operating Temperature Range	-20°C +85°C
Storage Temperature Range	-25°C +90°C
Case Material	Blue Nylon 66
Cable	3 x Round 0.14mm <sup>2</sup> PVC covered Grey and insulated Brown / White / Green

As part of the company policy of continued product improvement, specifications may change without notice. Our sales office will be pleased to help you with the latest information on this product range and the details of our full design and manufacturing service. All products are supplied to our standard conditions of sale unless otherwise agreed in writing.

**Phone: (1) 973 777 6900**

**www.comus-intl.com**

**Fax: (1) 973 777 8405**

Belgium: + 32 (0)12 390400 - Comus Europe Ltd (Assemtech) UK: +44 (0) 1255 862236 - Germany: +49 (0)911 923 15 943 - Netherlands: +31(0)45 54 39 345 - India: +(91) (44) 43219090

©2015 Copyright Comus International, 454 Allwood Road, Clifton NJ 07012, USA