

CONTROL PRODUCTS

Piezo switches, Point Illuminated

Aluminium piezo switches offering rugged, sealed tamper and vandal resistant solid state switching. Exceptional durability and reliability.

- Red/green spot illumination
- 28mm diameter actuator
- 22.5mm diameter mounting hole (PG16)
- Normally open, momentary action
- Make impulse time of 125-300 msec
- Choice of flat and recessed actuator
- Wire termination
- IP68 Sealed

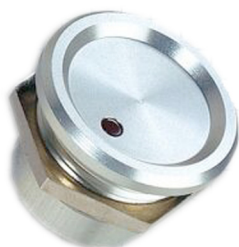
SPECIFICATIONS

Operating voltage	1-24V AC/DC
Switching current	0.2A max
Actuation force	3-5N
Operating temperature	from -40°C to +125°C
Ingress Protection	IP68
Lifetime	50 million operations
'ON' resistance	<20Ω
'OFF' resistance	>5mΩ

CPS22IF-ALNA-24RG



CPS22IR-ALNA-24RG



PART NO.	DESCRIPTION
CPS22IF-ALNA-24RG	Flush
CPS22IR-ALNA-24RG	Recessed

