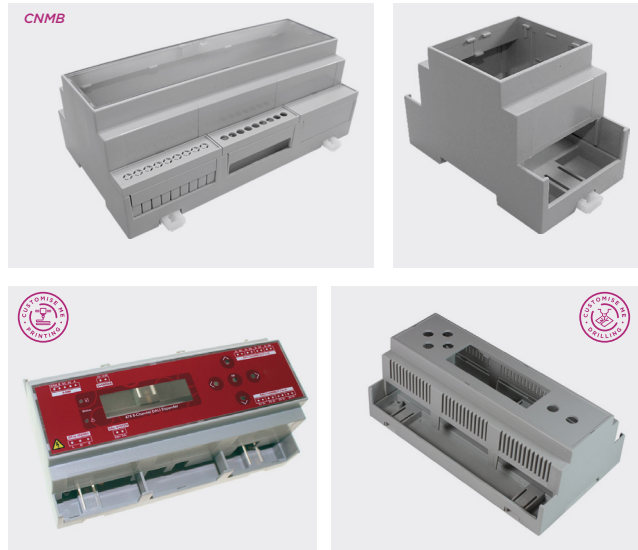


DIN Rail modular enclosures

Product overview

- Snap fit modular design for ease of assembly and custom kitting
- Base fits 35mm DIN Rail or directly to flat surface
- Moulded in light grey UL94-V0 flame retardant polycarbonate
- Carries up to 3 PCBs horizontally or 2 vertically
- Snap fit terminal cover options for IP20 finger protection
- Snap in top covers available in grey, clear, transparent red and smoked
- Standard enclosure consists of base, top and rail/wall clips
- Open top as standard, solid top, vented and extended wall options available
- Covers and terminal guards ordered separately and can be supplied in kits
- Easily customised covers and terminal guards and CNMB base
- Clear, smoked and red covers are moulded in PC UL94-V2
- Grey covers are PC UL94-V0
- Enclosed base offers isolation from DIN Rail
- Front panel ideal for screen printing and recessed solid top for labels and membranes
- Other colours and EMC shielding available to order



	BOX LENGTH	HORIZONTAL PCB SIZES			VERTICAL PCB SIZES	
		A	B	C	D	E
CNMB/1-	17.5mm	86.5x14mm	57x14mm	41.8x14mm	34x59.6mm	40x14.8mm
CNMB/2-	36mm	86.5x33mm	57x32mm	42x32mm	34x59.6mm	40x33mm
CNMB/3-	53.4mm	86.5x50mm	57x49mm	42x49mm	34x59.6mm	40x50mm
CNMB/4-	71.2mm	86.5x68mm	57x67mm	42x67mm	34x59.6mm	40x68mm
CNMB/5-	88mm	86.5x84mm	57x83mm	42x83mm	34x59.6mm	40x84mm
CNMB/6-	106.2mm	86.5x103mm	57x102mm	42x102mm	34x59.6mm	40x103mm
CNMB/9-	159.2mm	86.5x156mm	57x155.5mm	42x155mm	34x59.6mm	40x155mm
CNMB/12-	212.1mm	86.5x208mm	57x207mm	42x207mm	34x59.6mm	40x208mm

For exposed terminal positions both sides, add /2 to part number (e.g. CNMB/5/2)

For exposed terminal positions one side only, add /1 to part number (e.g. CNMB/5/1). Please note, this is only available as standard in sizes 5, 6 and 9

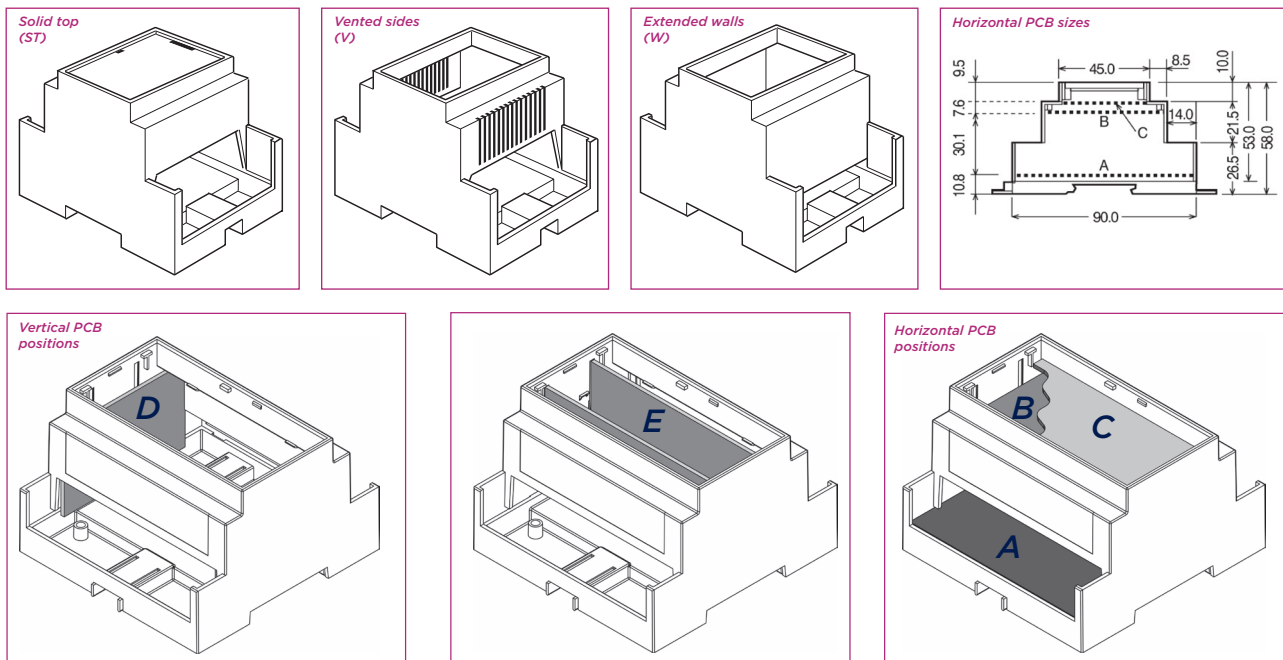
Box supplied with open top as standard

For solid recessed top used for membrane keypads or clear covers to enclose labels, add ST to part number (e.g. CNMB/3ST/2)

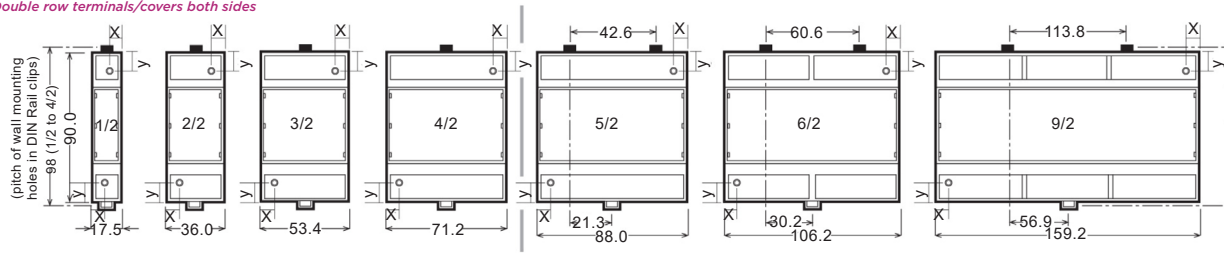
For cooling vents both sides add V to part number (e.g. CNMB/3V/2)

For extended side walls which meet the lower PCB behind terminals, add W to part number (e.g. CNMB/3W/2) - terminal guards do not fit extended wall versions

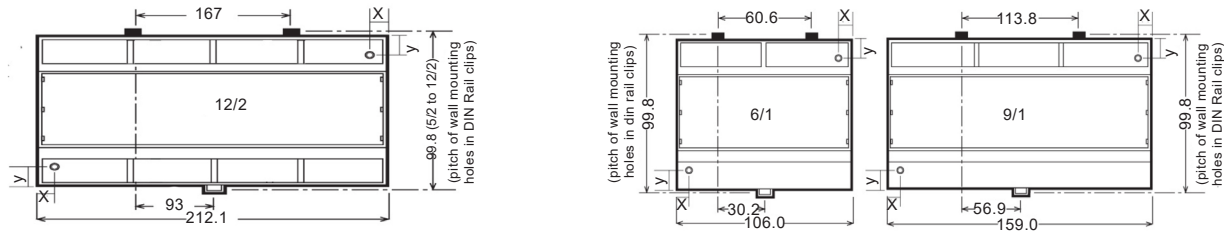
Combinations of body types are available (e.g. solid top with vented sides). These may be subject to MOQ



Double row terminals/covers both sides



Single row terminals/covers on one side

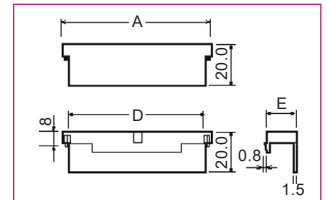
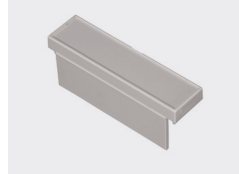


Solid

PART NO.	STYLE	A	D	E
CNMB/1/TGS	Solid	17.5mm	15.0mm	14.3mm
CNMB/2/TGS	Solid	35.5mm	29.9mm	13.8mm
CNMB/3/TGS	Solid	52.8mm	45.5mm	13.8mm
CNMB/4/TGS	Solid	70.6mm	59.9mm	13.8mm
CNMB/5/TGS	Solid	87.6mm	79.5mm	13.8mm

For 6, 9 and 12 size module use CNMB/3TGS

CNMB/x/TGS

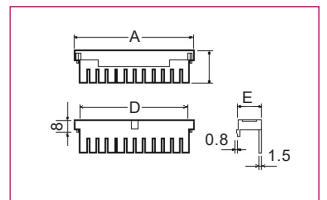


5.08mm pitch perforated

PART NO.	STYLE	A	D	E
CNMB/1/TG508P	Perforated	17.5mm	15.0mm	14.3mm
CNMB/2/TG508P	Perforated	35.5mm	29.9mm	13.8mm
CNMB/3/TG508P	Perforated	52.8mm	45.5mm	13.8mm
CNMB/4/TG508P	Perforated	70.6mm	59.9mm	13.8mm
CNMB/5/TG508P	Perforated	87.6mm	79.5mm	13.8mm

For 6, 9 and 12 size module use CNMB/3/TG508P

CNMB/x/TG508P

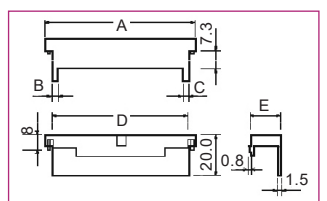


5.08mm pitch pre-drilled

PART NO.	STYLE	POLES	A	B	C	D	E
CNMB/1/TG508	Pre-drilled	3	17.5mm	2.3mm	2.3mm	15.0mm	14.3mm
CNMB/2/TG508	Pre-drilled	6	35.5mm	0.9mm	2.7mm	29.9mm	13.8mm
CNMB/3/TG508	Pre-drilled	9	52.8mm	2.3mm	2.3mm	45.5mm	13.8mm
CNMB/4/TG508	Pre-drilled	12	70.6mm	2.7mm	5.8mm	59.9mm	13.8mm
CNMB/5/TG508	Pre-drilled	15	87.6mm	2.7mm	5.8mm	79.5mm	13.8mm

For 6, 9 and 12 size module use CNMB/3/TG508

CNMB/x/TG508

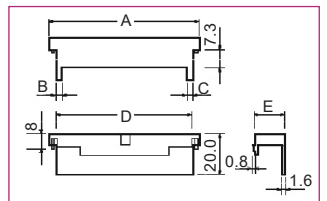
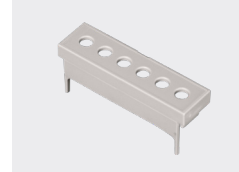


7.5mm pitch pre-drilled

PART NO.	STYLE	POLES	A	B	C	D	E
CNMB/1/TG750	Pre-drilled	2	17.5mm	2.3mm	2.3mm	15.0mm	14.3mm
CNMB/2/TG750	Pre-drilled	4	35.5mm	0.9mm	2.7mm	29.9mm	13.8mm
CNMB/3/TG750	Pre-drilled	6	52.8mm	2.3mm	2.3mm	45.5mm	13.8mm
CNMB/4/TG750	Pre-drilled	8	70.6mm	2.7mm	5.8mm	59.9mm	13.8mm
CNMB/5/TG750	Pre-drilled	10	87.6mm	2.7mm	5.8mm	79.5mm	13.8mm

For 6, 9 and 12 size module use CNMB/3/TG750

CNMB/x/TG750

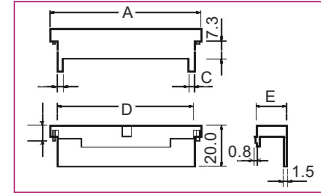




10.16mm pitch pre-drilled

PART NO.	STYLE	POLES	A	B	C	D	E
CNMB/1/TG100	Pre-drilled	2	17.5mm	1.0mm	1.0mm	15.0mm	14.3mm
CNMB/2/TG100	Pre-drilled	3	35.5mm	0.9mm	0.9mm	29.9mm	13.8mm
CNMB/3/TG100	Pre-drilled	5	52.8mm	1.0mm	1.0mm	45.5mm	13.8mm
CNMB/4/TG100	Pre-drilled	6	70.6mm	2.7mm	2.7mm	59.9mm	13.8mm
CNMB/5/TG100	Pre-drilled	7	87.6mm	2.7mm	5.8mm	79.5mm	13.8mm

CNMB/x/TG100



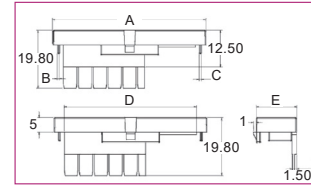
For 6, 9 and 12 size module use CNMB/3/TG100

RJ45 5.08mm pitch perforated

PART NO.	STYLE	POLES	A	B	C	D	E
CNMB/3/TGRJ45	Perforated	5	52.8mm	1.0mm	1.0mm	45.5mm	13.8mm

Can be used on sizes 3, 6, 9 and 12

CNMB/x/TGRJ45

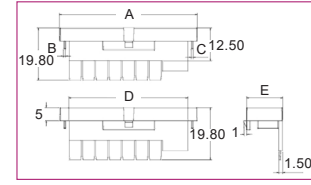
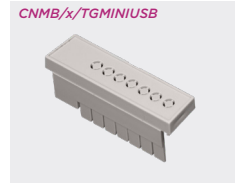


MINI USB 5.08mm pitch perforated

PART NO.	STYLE	POLES	A	B	C	D	E
CNMB/3/TGMINIUSB	Perforated	7	52.8mm	1.0mm	1.0mm	45.5mm	13.8mm

Can be used on sizes 3, 6, 9 and 12

CNMB/x/TGMINIUSB

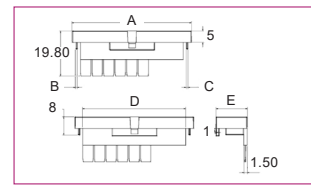


USB 5.08 pitch perforated

PART NO.	STYLE	POLES	A	B	C	D	E
CNMB/3/TGUSB	Perforated	6	52.8mm	1.0mm	1.0mm	45.5mm	13.8mm

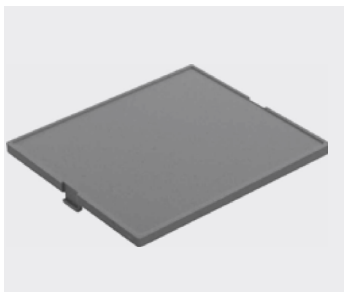
Can be used on sizes 3, 6, 9 and 12

CNMB/x/TGUSB



COVERS

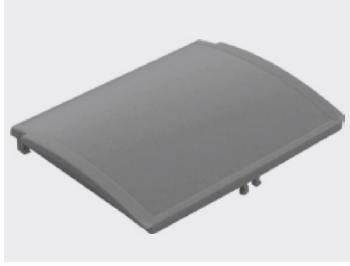
Standard covers



RED TRANSPARENT	SMOKED TRANSPARENT	CLEAR TRANSPARENT	GREY	SIZE
CNMB/1/PR	CNMB/1/PS	CNMB/1/PC	CNMB/1/PG	1
CNMB/2/PR	CNMB/2/PS	CNMB/2/PC	CNMB/2/PG	2
CNMB/3/PR	CNMB/3/PS	CNMB/3/PC	CNMB/3/PG	3
CNMB/4/PR	CNMB/4/PS	CNMB/4/PC	CNMB/4/PG	4
CNMB/5/PR	CNMB/5/PS	CNMB/5/PC	CNMB/5/PG	5
CNMB/6/PR	CNMB/6/PS	CNMB/6/PC	CNMB/6/PG	6
CNMB/9/PR	CNMB/9/PS	CNMB/9/PC	CNMB/9/PG	9
-	-	CNMB/12/PC	CNMB/12/PG	12



Curved covers



RED TRANSPARENT	SMOKED TRANSPARENT	CLEAR TRANSPARENT	GREY	SIZE
CNMB/2/PRC	CNMB/2/PSC	CNMB/2/PCC	CNMB/2/PGC	2
CNMB/3/PRC	CNMB/3/PSC	CNMB/3/PCC	CNMB/3/PGC	3
CNMB/4/PRC	CNMB/4/PSC	CNMB/4/PCC	CNMB/4/PGC	4
CNMB/5/PRC	CNMB/5/PSC	CNMB/5/PCC	CNMB/5/PGC	5
CNMB/6/PRC	CNMB/6/PSC	CNMB/6/PCC	CNMB/6/PGC	6
CNMB/9/PRC	CNMB/9/PSC	CNMB/9/PCC	CNMB/9/PGC	9

EXTENDED HEIGHT MODULES

- 16mm high
- Accepts curved hinged cover only
- Adds an additional horizontal PCB slot
- Does not fit on solid top CNMB's



PART NO.	WIDTH	SIZE
CNMB/2/E	34.7mm	2
CNMB/3/E	52.0mm	3
CNMB/4/E	70.0mm	4
CNMB/5/E	86.5mm	5
CNMB/6/E	104.5mm	6
CNMB/9/E	157.7mm	9

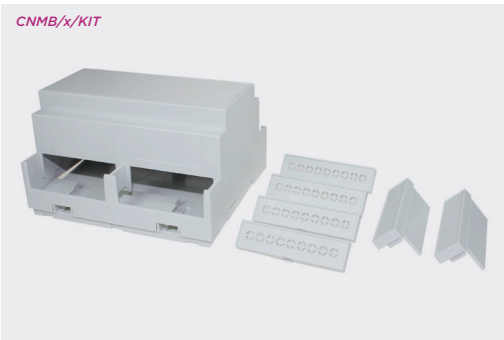
Curved hinged covers



RED TRANSPARENT	CLEAR TRANSPARENT	GREY	SIZE
CNMB/2/HPRC	CNMB/2/HPCC	CNMB/2/HPGC	2
CNMB/3/HPRC	CNMB/3/HPCC	CNMB/3/HPGC	3
CNMB/4/HPRC	CNMB/4/HPCC	CNMB/4/HPGC	4
CNMB/5/HPRC	CNMB/5/HPCC	CNMB/5/HPGC	5
CNMB/6/HPRC	CNMB/6/HPCC	CNMB/6/HPGC	6
CNMB/9/HPRC	CNMB/9/HPCC	CNMB/9/HPGC	9

- For use with extended height module only

ENCLOSURE KITS



- Each kit contains one grey panel cover and a selection of solid and perforated terminal guards
- Kits of the most frequently used components are available to order

** For size 6, 9 and 12, multiple 'size 3' terminal guards are supplied. For example size 6 requires 2x 'size 3' guards per side.*

Kits are also available for vented, solid top and extended wall bodies e.g. CNMB/2ST/KIT.

Extended wall kits do not come with terminal guards

	COMPONENT	COVER	TERMINAL GUARDS		EXTENSION MODULE
KIT	KIT PART NO.	/PG	/TG508P	/TGS	/E
STANDARD	CNMB/1/KIT	1	2	1	-
	CNMB/2/KIT	1	2	1	-
	CNMB/3/KIT	1	2	1	-
	CNMB/4/KIT	1	2	1	-
	CNMB/5/KIT	1	2	1	-
	CNMB/6/KIT	1	4*	2*	-
	CNMB/9/KIT	1	6*	3*	-
	CNMB/12/KIT	1	8*	4*	-

	COMPONENT	COVER	TERMINAL GUARDS		EXTENSION MODULE
KIT	KIT PART NO.	/HPCC	/TG508P	/TGS	/E
EXTENDED HEIGHT	CNMB/2E/KIT	1	2	1	1
	CNMB/3E/KIT	1	2	1	1
	CNMB/4E/KIT	1	2	1	1
	CNMB/5E/KIT	1	2	1	1
	CNMB/6E/KIT	1	4*	2*	1
	CNMB/9E/KIT	1	6*	3*	1